



Submittal Data Sheet

4.0-Ton DC-Ducted Concealed Ceiling Unit

FXMQ48PBVJU

FEATURES

- Increased capacity range for increased flexibility
- Improved efficiency with DC fan motor
- Ease of installation with auto adjusting airflow at commissioning based on external static pressure
- Easy maintenance with service access from below
- Installation flexibility with a low profile, compact design at less than 12" in height
- Integral condensate pump with up to 18-3/8" lift
- Standard Limited Warranty: 10-year warranty on compressor and all parts

BENEFITS

- Enhanced indoor air quality and LEED ready with MERV 13 filter options
- Flexible ductwork design with ESP capabilities up to 0.80" W.G.
- New economizer control logic
- New configurable auxiliary heater control logic
- Design allows it to be completely concealed - perfect for retail, classrooms, offices, banks, restaurants, and hotels.





Submittal Data Sheet

4.0-Ton DC-Ducted Concealed Ceiling Unit

FXMQ48PBVJU

PERFORMANCE

Indoor Unit Model No.	FXMQ48PBVJU	Indoor Unit Name:	4.0-Ton DC-Ducted Concealed Ceiling Unit
Type:	Ducted	Rated Cooling Conditions:	Indoor (°F DB/WB): 80 / 67 Ambient (°F DB/WB): 95 / 75
Rated Cooling Capacity (Btu/hr):	48,000	Rated Heating Conditions:	Indoor (°F DB/WB): 70 / 60 Ambient (°F DB/WB): 47 / 43
Sensible Capacity (Btu/hr):	35,800	Rated Piping Length(ft):	
Cooling Input Power (kW):	0.460	Rated Height Separation (ft):	
Rated Heating Capacity (Btu/hr):	54,000		
Heating Input Power (kW):	0.45		

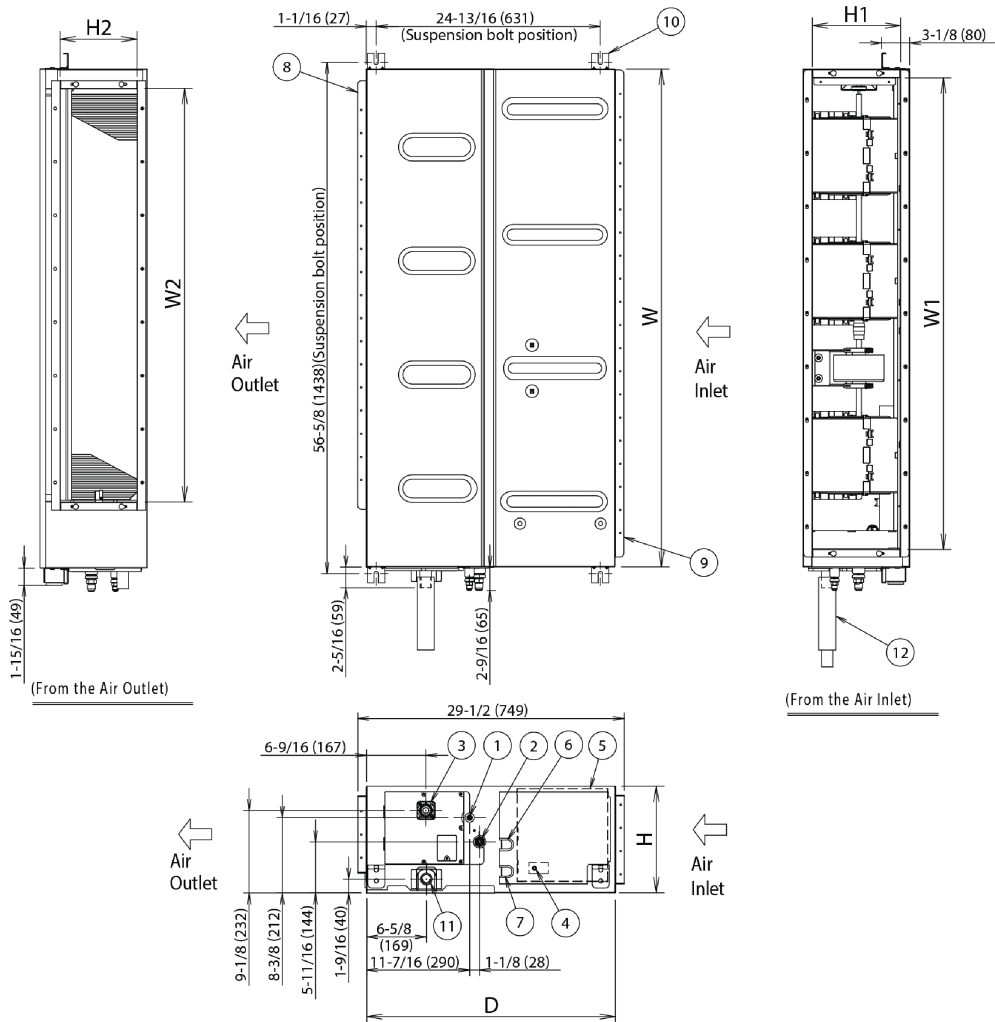
INDOOR UNIT DETAILS

Power Supply (V/Hz/Ph):	208-230 / 60 / 1	Airflow Rate (HH/H/L) (CFM):	1,377/1165/988
Power Supply Connections:	L1, L2, Ground	Moisture Removal (Gal/hr):	
Min. Circuit Amps MCA (A):	3.4	Gas Pipe Connection (inch):	5/8
Max Overcurrent Protection (MOP) (A):	15	Liquid Pipe Connection (inch):	3/8
Dimensions (HxWxD) (in):	11-13/16 x 55-1/8 x 27-9/16	Condensate Connection (inch):	1-1/4
Net Weight (lb):	102	Sound Pressure (H/L) (dBA):	42/40
Ext. Static Pressure (Rated/Max) (inWg):	0.4" / 0.8"	Sound Power Level (dBA):	70

Submittal Data Sheet

4.0-Ton DC-Ducted Concealed Ceiling Unit
FXMQ48PBVJU

DIMENSIONAL DRAWING



H	11-13/16 (300)
W	55-1/8 (1400)
D	27-9/16 (700)
Air Inlet	H1 9-3/4 (247)
	W1 52-3/16 (1325)
Air Outlet	H2 8-7/16 (215)
	W2 45-11/16 (1160)

1 2	Drain hose(Accessory)	O.D.φ1-1/4(φ32)(Outlet)
1 1	Socket(For maintenance)	VP25(O.D.φ1-1/4(φ32),I.D.φ1(φ25))
1 0	Hanger	For M10
9	Air Inlet flange	
8	Air Outlet flange	
7	Power supply connection	
6	Transmission wiring connection	
5	Control box(Inside)	
4	Ground terminal(Terminal in Control box)	M4
3	Drain pipe connection	VP25(O.D.φ1-1/4(φ32),I.D.φ1(φ25))
2	Gas pipe connection	φ5/8(φ15.9) flare connection
1	Liquid pipe connection	φ3/8(φ9.5) flare connection
ITEM	PART NAME	REMARK

Note: For additional dimensional data and clearance information, refer to Engineering Data